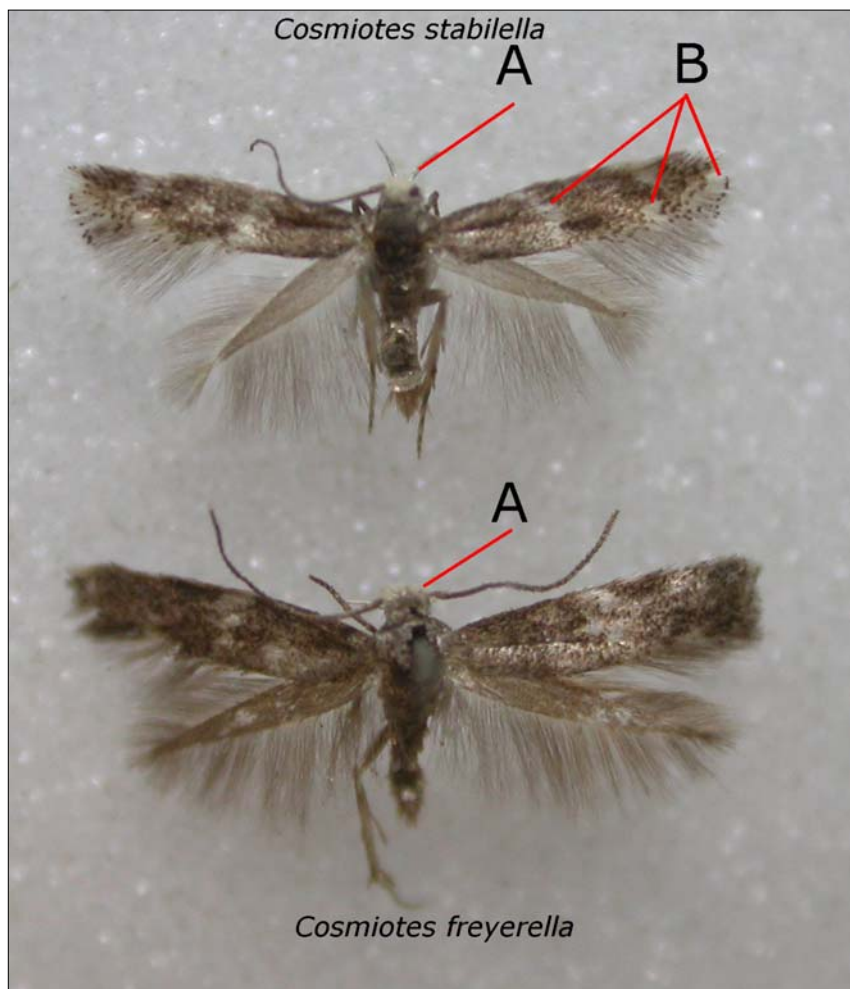


Some notes on the separation of *Cosmiotes freyerella*, *C. stabilella* & *C. consortella*

Although the separation of *C. freyerella* and *C. stabilella* can be almost impossible via genitalia, the observer should pay attention to the frons and head **A**. In *Cosmiotes stabilella* this area is **white** contrasting with the thorax but in *C. freyerella* this area is grey, appearing concolorous with the thorax. In *C. stabilella* the median fascia, tornal and costal spot **B** are also more conspicuous than in *C. freyerella* but this will be lost in worn specimens.



In *Cosmiotes consortella* the frons and head are as in *C. freyerella*, sometimes 'mottled grey' but this can be very hard to interpret and confusion is easy. Referral to the genitalia is then essential, *C. consortella* lacks the apical hook on the valva of the male, see the Dissection Group web site at <http://www.dissectiongroup.co.uk/page1030.html>

Jon Clifton
Norfolk